



# **LEAP Flexible Pouch Packer**



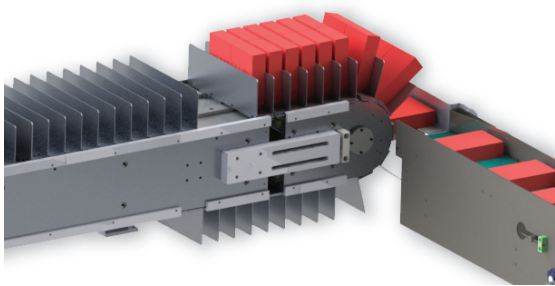
**Your Singapore Packaging  
Automation Partner in S.E.Asia**

LEAP Flexible Pouch Packer – Fully automated self developed 2-axis robot arm with kinematic controller enable to consistently deliver flawless and speedy pick and place application.

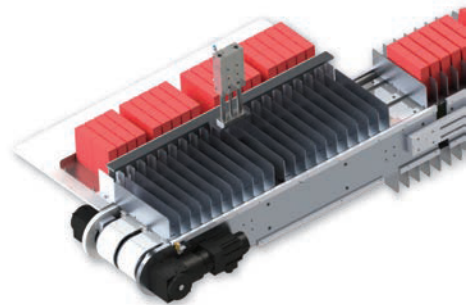
This automatic packing systems are capable to handle various format and ready to work with different products and packing configurations. Depending on the product type, shape, size and weight.

LEAP customized feeding collator, gripper, and software are ready to handle some of the most challenging packing needs.

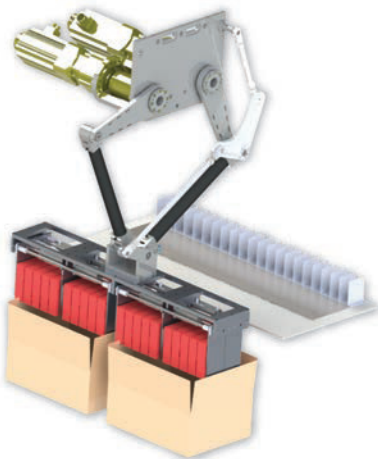
## OPERATION SEQUENCE



Feeder and Collator



Servo Pusher



Top Loading




Gripper



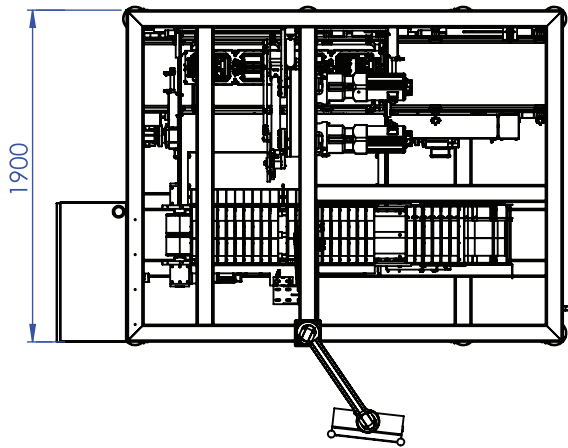
## FEATURES

- Continuous In-Line operation for RSC carton.
- Automatic servo feeding and handling system to work with different formats, products, and patterns.
- Servo driven collator using timing belt to eliminate the use of chain and mechanical gears providing optimal and precise operating performance. This will drastically reduce the wear and tear and frequency of maintenance.
- Two axis servo driven pick and place arm for high speed and consistent performance while achieving precise movement control.
- Customized gripper design for various product handling.
- Lubrication free handling system for both carton and product.
- All-round machine guarding including interlock doors for safety.
- 12”HMI colour touch screen.

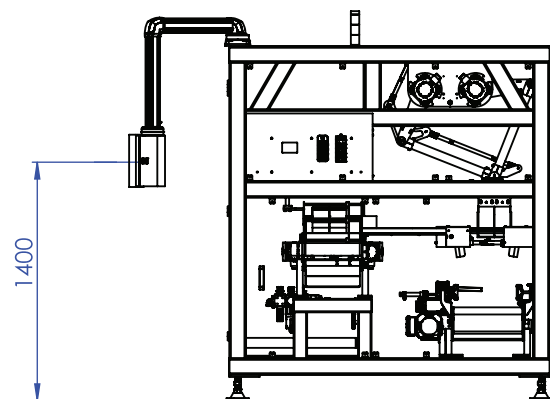
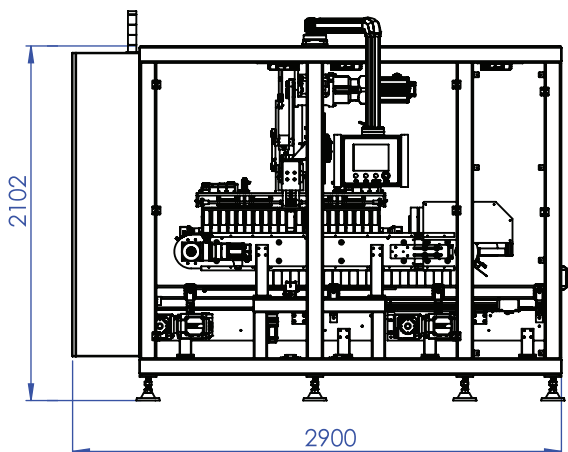
## BENEFIT

- Greatly reduced pneumatic system reliance by replacing it with independent servo motors. This advance technology discarded the unreliable of air supplies to ensure consistency in product handling and collating.
  - Conventional and complex pneumatic system is replaced with a simple and reliable 2 axis servo driven robot. This advance technology enhance consistency in performance and ease of trouble shooting.
  - Machine is ergonomically designed with maximum accessibility with full height door panels. This helps in ease of maintenance or trouble shooting with minimum obstructions in reaching most parts within the machine.
  - Complete in-house machine design and technical know-how to ensure cost competitiveness, timely spare availability, and full capacity in machine servicing and operation.
  - Total machine management via extra-large colour touch screen for easy machine interactive and control.
  - Integrating with external case former and sealer for maximum carton types and sizes flexibility.
- 

## TECHNICAL SPECIFICATION



- Maximum Machine Speed : 25 cycle/min
- Minimum product size : 110mmL x 90mmW x 25mmT
- Maximum product size : 300mmL x 240mmW x 100mmT
- Maximum Payload : 30Kg  
(with gripper)
- Minimum Carton Size : 250mmL x 200mmW x 150mmH
- Maximum Carton Size : 360mmL x 300mmW x 300mmH
- Power Requirement : 15 kW 3Phase+Neutral,400Vac
- Operation Air pressure : 6 bar
- Air Consumption : 20Nm3/hr
- Colour (Standard) : RAL 9006 (White Aluminium)
- Working Environment:
  - Temperature : 5°C - 40°C (+/- 2°C)
  - Relative Humidity : 35% - 85%
- Basic Machine Dimension : 2900mmL x 1900mmW x 2100mmH
- Machine Weight (approx..) : 2200kg



## CONTACT US

### SINGAPORE

- 📍 JTC Space @ Tampines North  
10,Tampines North Drive 4,  
#07-05,Singapore 528553
- ☎ +65 6757 2232
- ✉ info@leapmachinery.com
- 🌐 http://www.leapmachinery.com

### INDONESIA

- 📍 Jln RE Sulaeman No. 33 Kebon  
Kopi Kel. Puspanegara Kec.  
Citeureup Bogor –  
Jawa Barat 16810, Indonesia
- ☎ + 62 21 8794 5960

### VIETNAM

- 📍 9/24 Doan Thi Diem Street  
Ward 1,Phu Nhuan District  
Ho Chi Minh City,  
Vietnam
- ☎ + 84 8 3511 5790